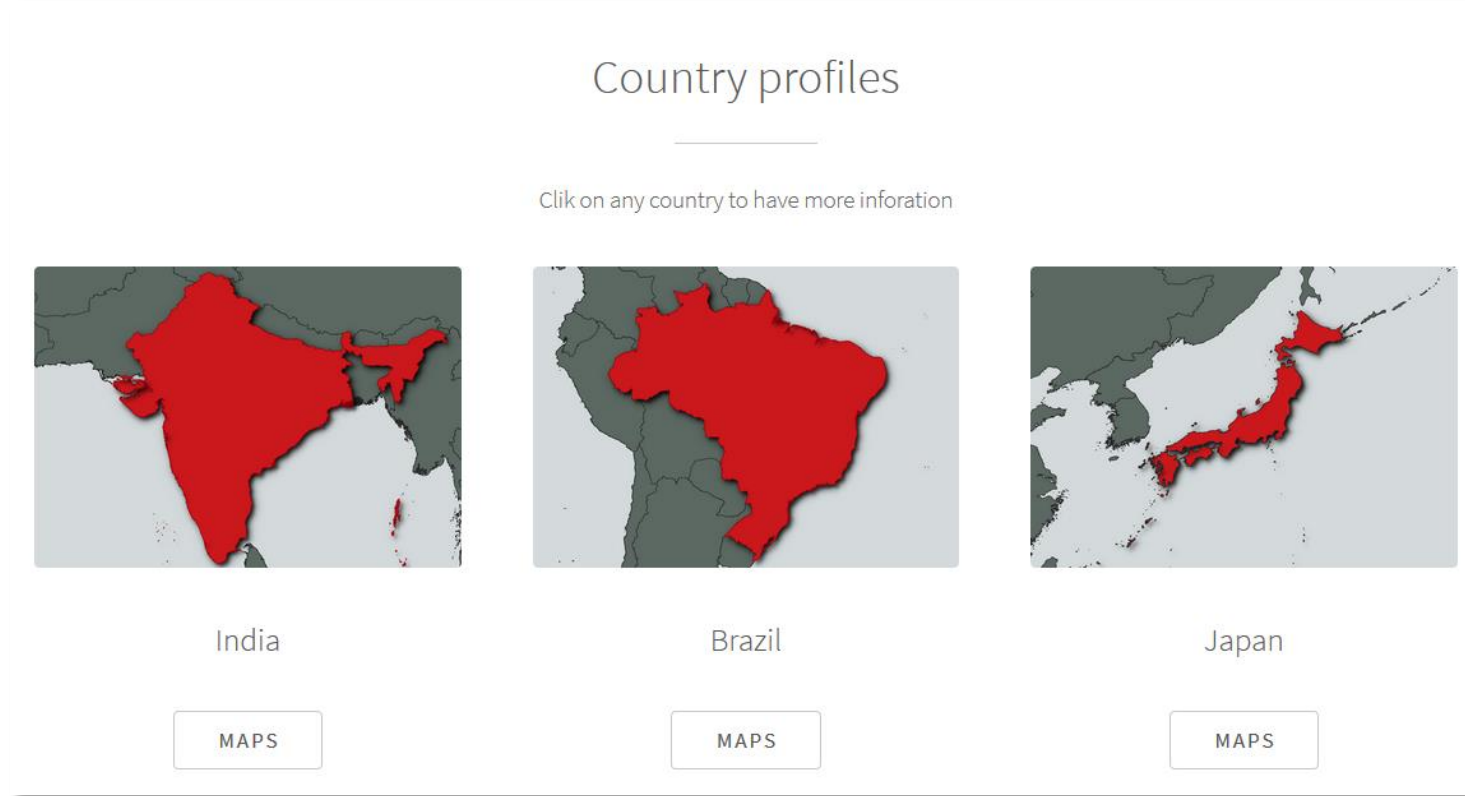


EM-DAT Atlas

- Goals of the project:
 1. Give EM-DAT users a first overview of geo-referenced data
 2. Show different mapping possibilities for EM-DAT data
 3. Let users interact with the data (interactive maps)

A website to access interactive maps

- The user selects a country to display different interactive maps
- +/- 10 different country profiles

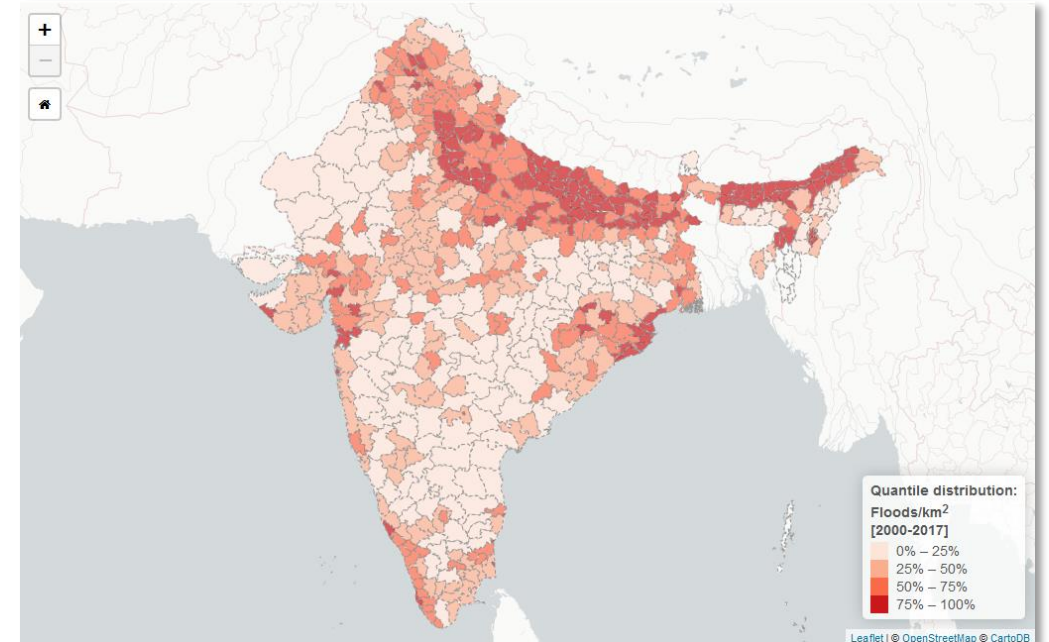


Different geo-referenced EM-DAT visualisations

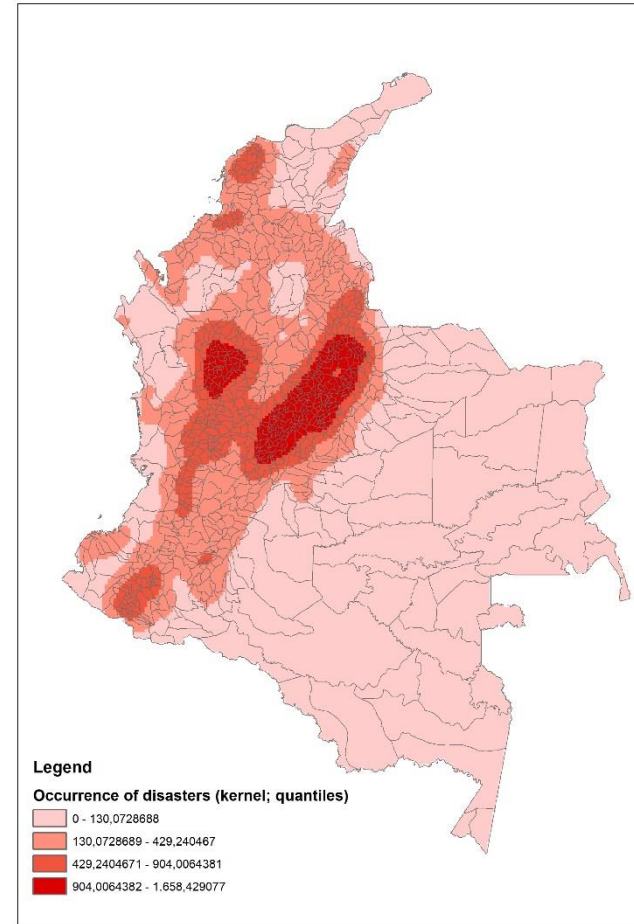
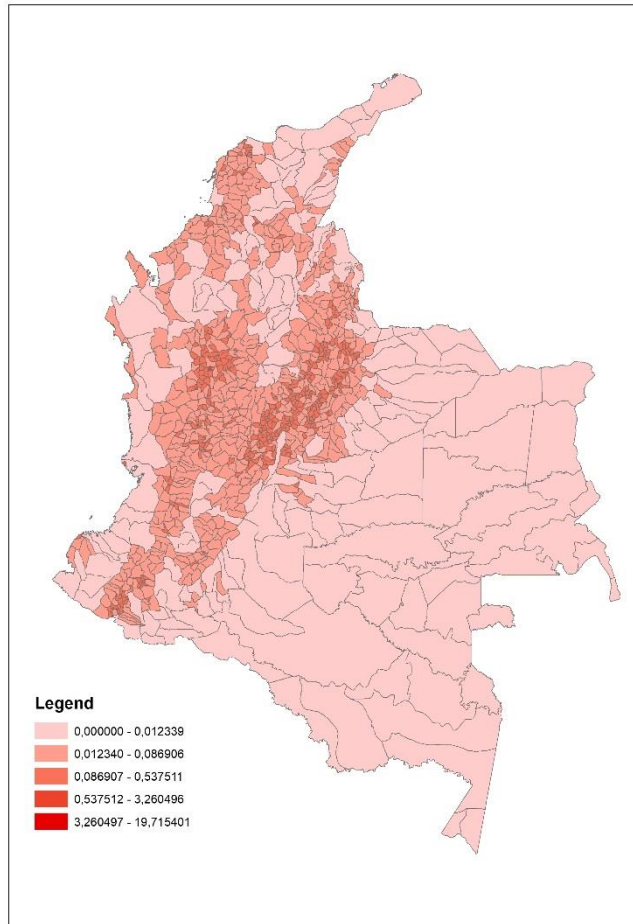
Grad symbol: number of disasters



Density: number of disasters /km²

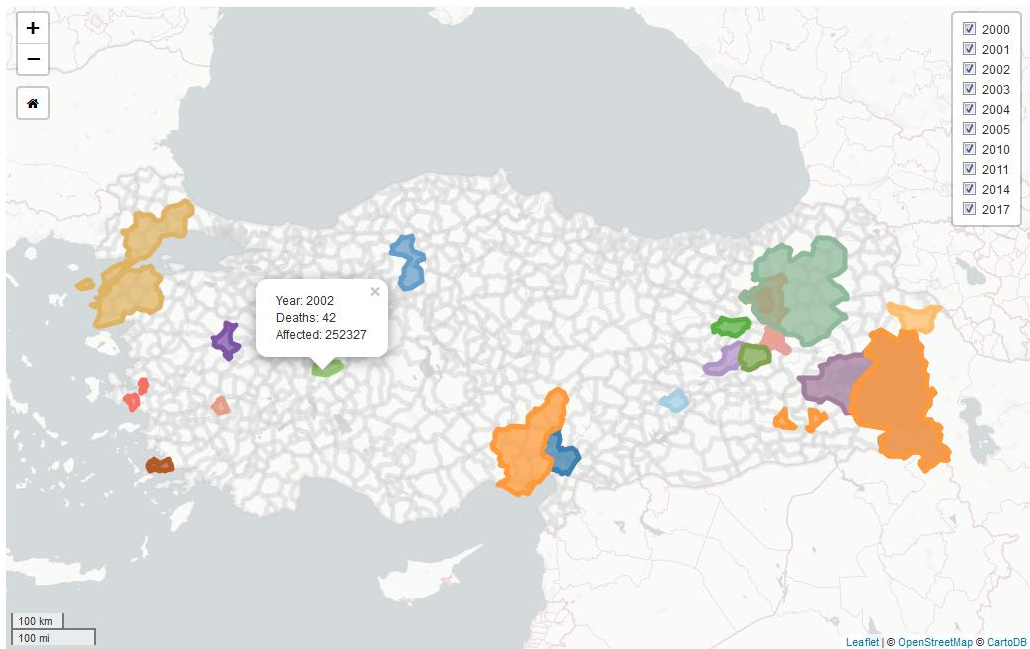


From grad symbol to kernel density estimation



Other types of visualisation

Single event



Single event and gridded data (population count)

