



centre for humdata



OCHA

**Connecting People and Data**  
to Improve Lives



centre for humdata



# The Humanitarian Data Exchange

Disaster data, data availability and user demand

Javier Teran  
Data Partnerships Team Lead

EM-DAT 11th Technical Advisory Group Meeting  
Brussels 16-17 October, 2019

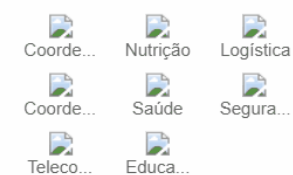


## MOÇAMBIQUE: Ciclone Idai

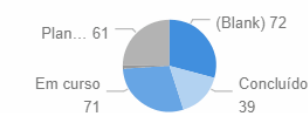
Presença das organizações na resposta

### VISAO GERAL

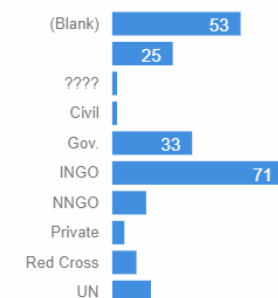
#### Setores com atividades na resposta



#### Status do projeto



#### Organoizações por tipo



### QUEM

**231** ORGS

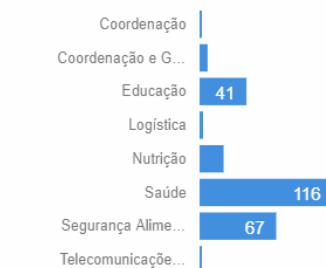
#### Distritos abrangidos por organização



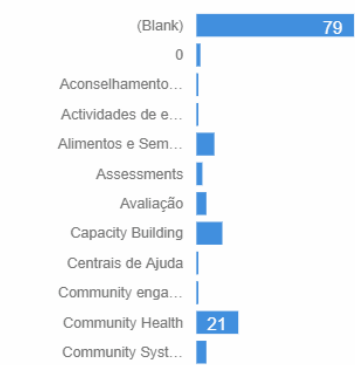
### O QUE

**8** SECTORES

#### Organizações por sectores



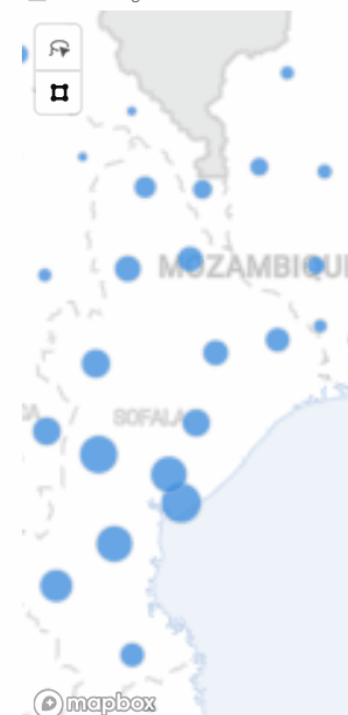
#### Distritos abrangidos por tipo de atividade



### ONDE

**12** PROVINCIAS

☐ (Blank)  
☐ Cabo Delgado



Os limites e nomes mostrados assim como as designações usadas neste mapa não implicam endosso oficial ou aceite das Nações Unidas. Fontes: Líderes locais, organizações parceiras, dados de campo. Os dados neste produto abrangem todos os projetos, independentemente do status, e as contagens são baseadas em relatórios organizacionais. As organizações incluem agências líderes e parceiras.



## COMMUNITY ENGAGEMENT WORKING GROUP

Earthquake, Tsunami, and Liquefaction in Central Sulawesi



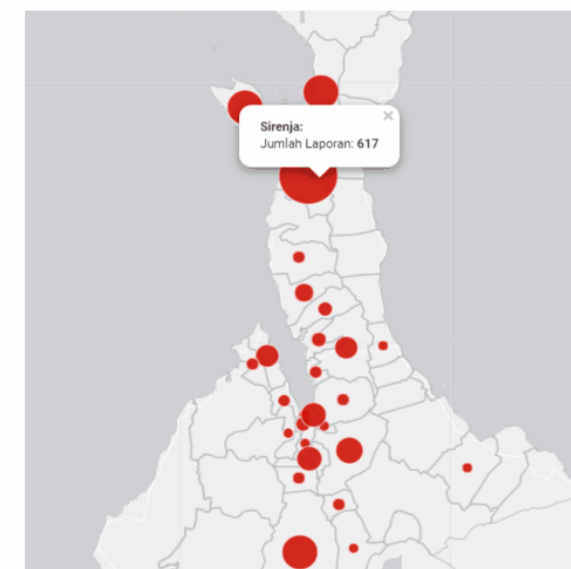
[Bahasa Version](#)

The Data of Community Feedback Dashboard are received from various humanitarian agencies who have been involved in Community Engagement Working Group in Palu, Central Sulawesi – Earthquake, Tsunami and Liquefaction Disaster. The Dashboard are designed to support humanitarian agencies or workers to make decision and adjust the programme by providing the knowledge of what affected community's concerns and needs in Central Sulawesi.

### Key Figures

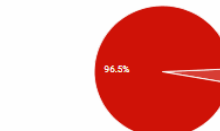


### Location Map



Select Period:

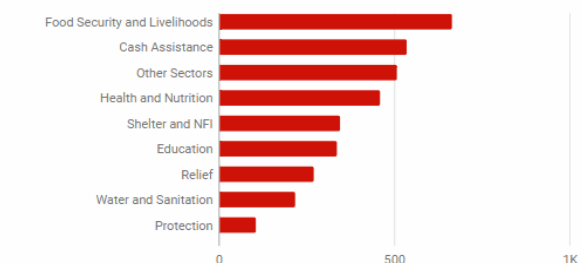
#### Report Status



#### Report Category



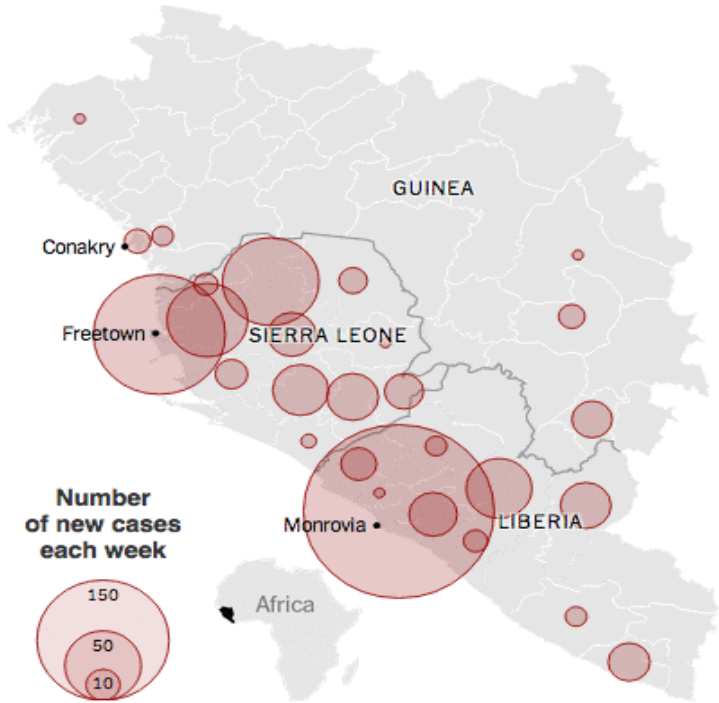
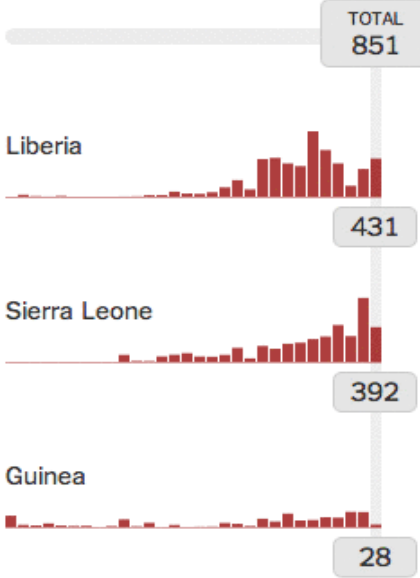
#### Sector



#### Feedback Channel



New cases for the week ended **Oct. 21**



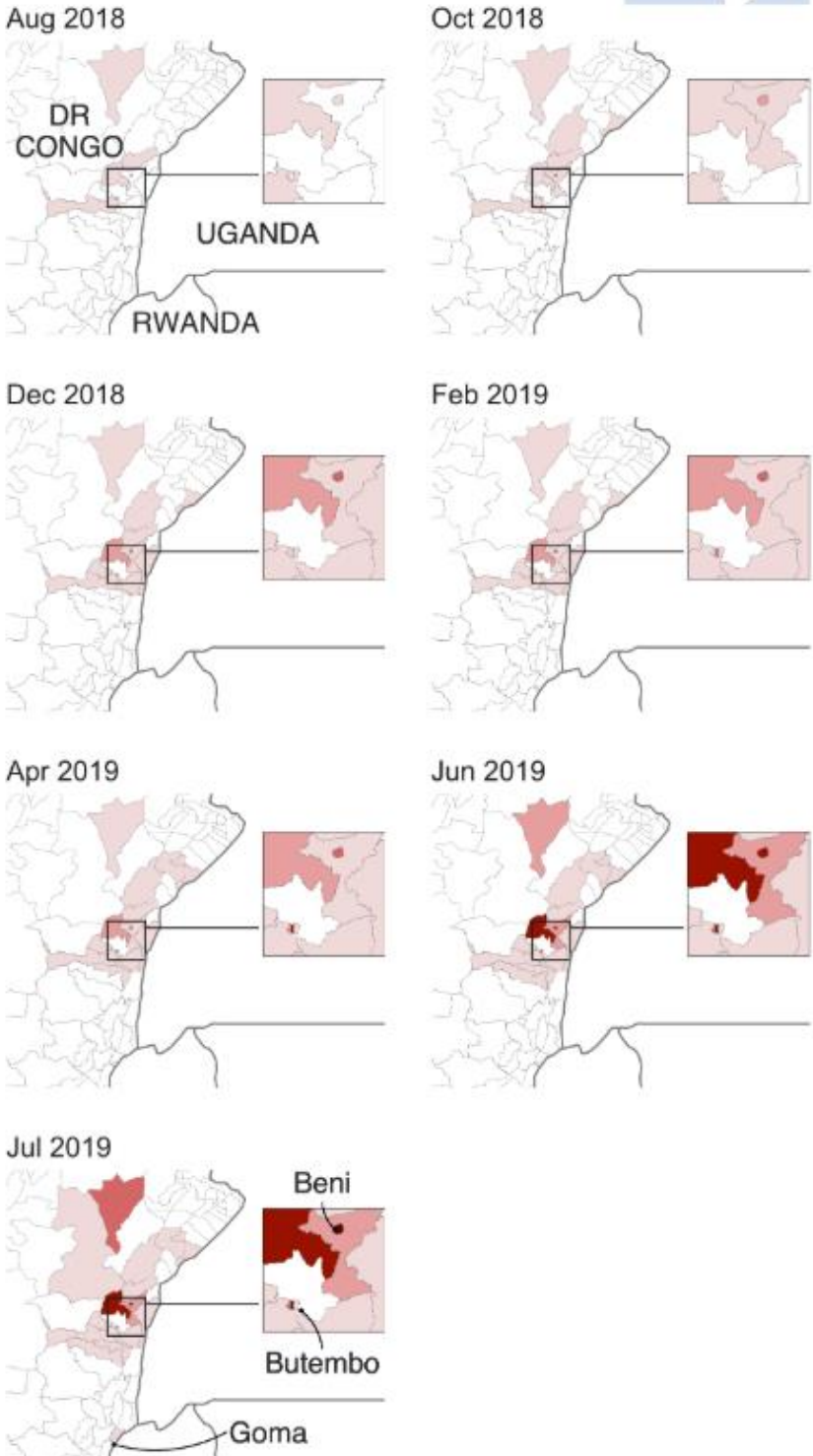
Note: Data is incomplete for certain time periods and locations because of the difficulties in collecting data in outbreak areas. Many officials believe that the number of cases and deaths are undercounted, but by how much is unknown.

Source: United Nations Office for the Coordination of Humanitarian Affairs, The Humanitarian Data Exchange

How Ebola has spread

Total cases since outbreak began

Color	Range
Lightest red	1-100
Light red	101-200
Red	201-300
Dark red	301-400
Darkest red	401+



Source: UN OCHA / The Humanitarian Data Exchange (Data to 02 Aug 2019) BBC

Future of the Holy Land

# Israel's growing settlements force stark choices about its future

The country cannot remain Jewish and democratic while controlling the entire Holy Land

Print edition | Graphic detail > Feb 2nd 2019



The "green line" marks the extent of Israel's territorial control before its victory in the six-day war of 1967.

**The mission** of the Centre is  
to increase the **use** and **impact** of  
data in humanitarian response.



# Centre for Humanitarian Data

The Hague Humanity Hub





## → **Speed of data**

We want to speed up the flow of data from collection to use so that humanitarian responders can find and share data that reflects a current day, real-time understanding of a crisis.

## → **Connections in the network**

We want to increase the number of organisations partnering with the Centre and each other through a shared data infrastructure and shared data goals.

## → **Increase use**

We want to ensure data is used better and more often by people making critical decisions in a humanitarian response, as well as make data and its related insights more accessible to all.

**NEW YORK**  
(USA)

**THE HAGUE**  
(NETHERLANDS)

**COPENHAGEN**  
(DENMARK)

**GENEVA**  
(SWITZERLAND)

**BUCHAREST**  
(ROMANIA)

**NAIROBI**  
(KENYA)

**DAKAR**  
(SENEGAL)

**JAKARTA**  
(INDONESIA)

Our Locations





WHAT WE DO

Data Services



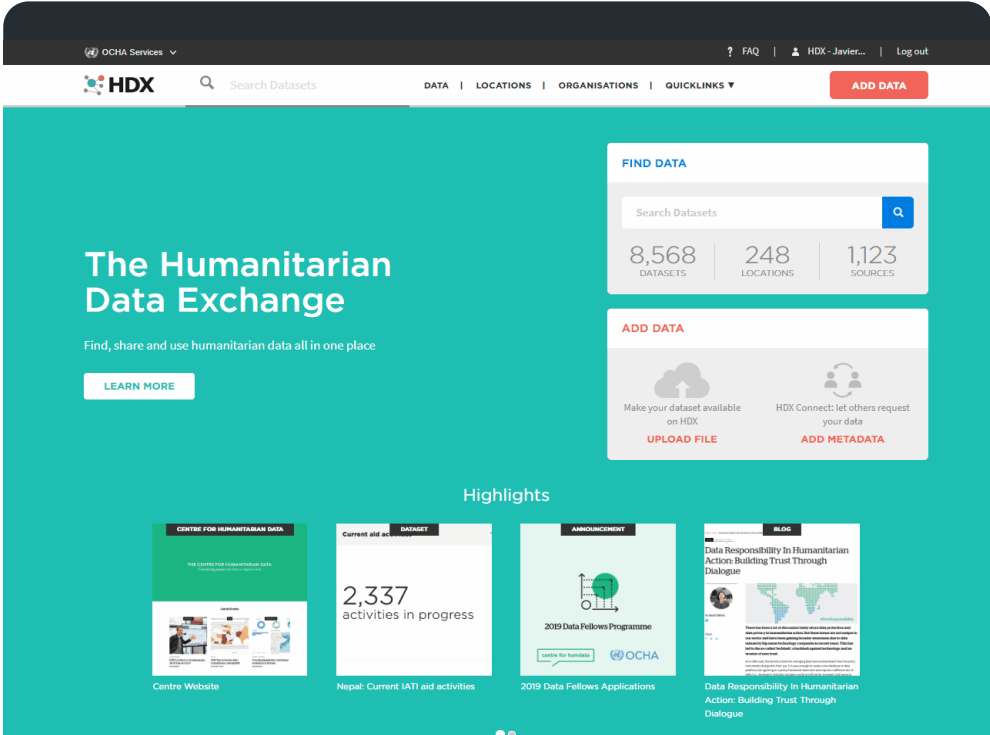
Enabling the sharing and use of data with the Humanitarian Data Exchange (HDX)



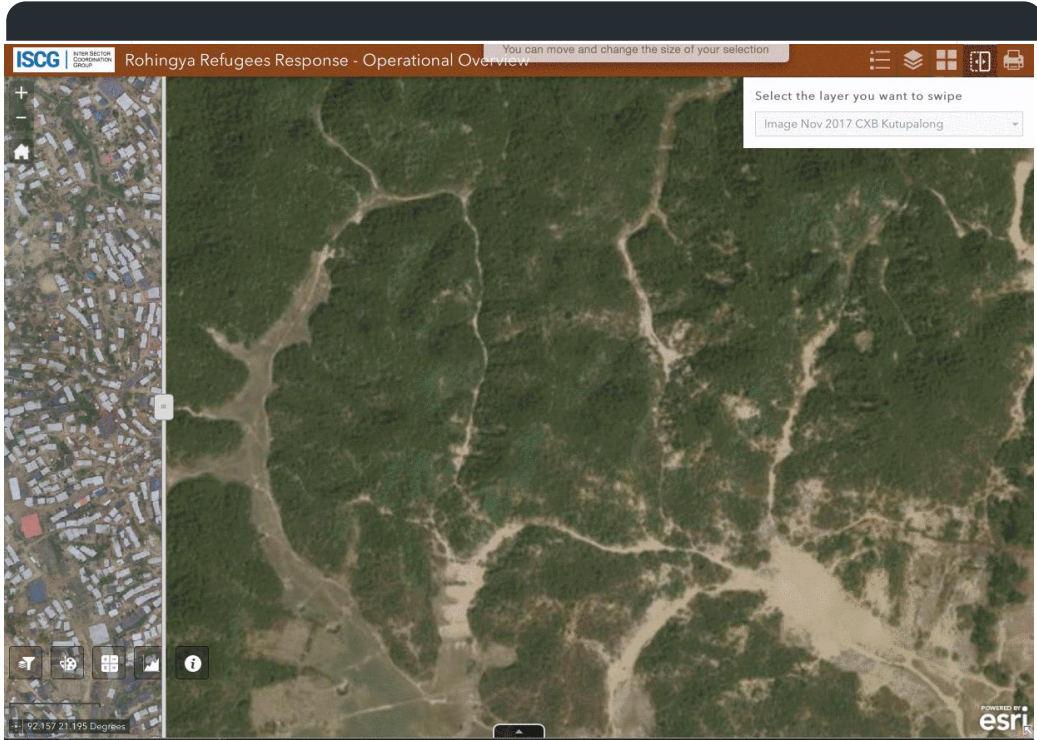
Creating interoperability of data with the Humanitarian Exchange Language (HXL)



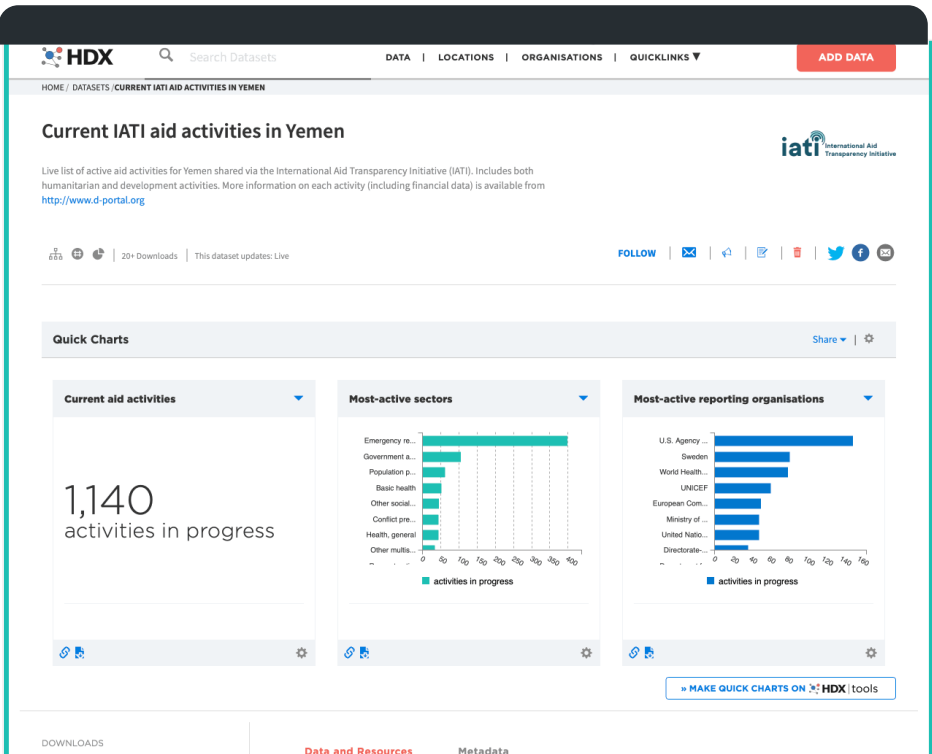
Supporting transparency in financial data with International Aid Transparency Initiative (IATI)



HDX: Humanitarian Data Exchange (data.humdata.org)



HXL: Humanitarian Exchange Language (hxlstandard.org)



IATI: International Aid Transparency Initiative (iatistandard.org)

# Humanitarian Data

1.

Data about the  
context of  
the crisis

2.

Data about the  
people affected  
and their needs

3.

Data about the  
humanitarian  
response

**HDX** makes data easy to find and use for analysis

<http://data.humata.org>

The screenshot shows the HDX website interface. At the top, there's a dark navigation bar with 'OCHA Services' on the left and 'FAQ', 'HDX - Javier...', and 'Log out' on the right. Below this is a teal header bar containing the HDX logo, a search bar labeled 'Search Datasets', and navigation links for 'DATA', 'LOCATIONS', 'ORGANISATIONS', and 'QUICKLINKS'. A red 'ADD DATA' button is positioned on the right side of the header.

The main content area has a teal background. On the left, the text 'The Humanitarian Data Exchange' is displayed in large white font, followed by the tagline 'Find, share and use humanitarian data all in one place' and a white 'LEARN MORE' button.

On the right side, there are two white panels. The top panel, titled 'FIND DATA', features a search bar and three statistics: 8,568 DATASETS, 248 LOCATIONS, and 1,123 SOURCES. The bottom panel, titled 'ADD DATA', contains two options: 'Make your dataset available on HDX' with an 'UPLOAD FILE' button, and 'HDX Connect: let others request your data' with an 'ADD METADATA' button.

Below these panels is a 'Highlights' section with four cards. The first card, 'CENTRE FOR HUMANITARIAN DATA', shows a website preview. The second card, 'Nepal: Current IATI aid activities', displays '2,337 activities in progress' under a 'DATASET' tab. The third card, '2019 Data Fellows Applications', features a line graph and is labeled 'ANNOUNCEMENT'. The fourth card, 'Data Responsibility In Humanitarian Action: Building Trust Through Dialogue', includes a world map and is labeled 'BLOG'.



# HDX at a Glance

**60,000**

USERS  
PER MONTH

**11,000+**

DATASETS  
SHARED

**1,200+**

GLOBAL DATA  
SOURCES

**250+**

ACTIVE  
ORGANISATIONS

**12,000**

Downloaders per  
month

## Disaster data on HDX

With **1300** datasets,  
**disaster data** is a significant data  
type on HDX.

These datasets are country-based  
extracts from CRED, IDMC,  
UNDRR, OCHA, UNOSAT, IOM,  
IFRC, WorldPop/UNFPA, HOT

[DATA](#) | [LOCATIONS](#) | [ORGANISATIONS](#) | [QUICKLINKS](#)

[ADD DATA](#)

[HOME](#) / [DATASETS](#)

**Data [1380]**

Show filter: ☒

Show 25 | 50 | 100

ORDER BY **Relevance**

Refine your search:
[Clear all](#)

**FEATURED:**

☐ CODs [7]
☐ Sub-national [943]
☐ Geodata [248]
☐ Datasets on request(HDX Connect) [3]
☐ Datasets with Quick Charts [213]
☐ Datasets with Showcase [1086]
☐ Datasets with HXL tags [212]

**LOCATIONS:**

☐ Afghanistan [17]
☐ Albania [5]
☐ Algeria [6]
☐ American Samoa [3]
☐ Andorra [3]

[More](#)

**FORMATS:**

☐ CSV [239]
☐ DOCX [9]
☐ GeoJSON [3]
☐ JSON [27]
☐ KML [1]

[More](#)

**ORGANISATIONS:**

☐ ALHASAN Systems Private Limited [1]
☐ American Red Cross [1]
☐ Assistance Coordination Unit [1]
☐ BRC Maps Team [1]
☐ CONRED Guatemala [2]

[More](#)

**TAGS:**

☐ access to water [1]
☐ activities - projects [1]
☐ administrative divisions [3]
☐ affected population [19]
☐ avalanche [9]

[More](#)

**LICENSES:**

☐ Creative Commons Attribution [48]
☐ Creative Commons Attribution Share-Alike [25]
☐ Creative Commons Attribution for Intergovernmental Organisations [259]
☐ Open Data Commons Attribution License (ODC-BY) [1]
☐ Open Data Commons Public Domain Dedication and License

**Maldives - Disaster Records**

OCHA ROAP  
100+ Downloads  
Updated July 18, 2018 | Dataset date: Jul 18, 2018  
This dataset updates: Every year

This datasets include Maldives Disaster Record recorded in Desinventar database by UNDP. The data were cleaned by the Faculty of Engineering, Science and Technology within the Maldives National University.

**Pakistan Presidential Disaster Declarations**

ALHASAN Systems Private Limited  
200+ Downloads  
Updated March 18, 2017 | Dataset date: Mar 15, 2017  
This dataset updates: Every six months

Pakistan Presidential Disaster Declarations

**Nepal Earthquake Disaster Atlas**

US National Geospatial-Intelligence Agency  
40+ Downloads  
Updated May 5, 2015 | Dataset date: May 4, 2015  
This dataset updates: Never

Web Map for access and download of MGRS based Disaster Atlases in support of ongoing Nepal Earthquake operations

**Philippines: Pre-Disaster Indicators**

OCHA Philippines  
3000+ Downloads  
Updated April 28, 2019 | Dataset date: Sep 1, 2015  
This dataset updates: Never

This datasets contains a collection of pre-disaster indicators for the Philippines.

**People killed in natural disasters**

HDX  
600+ Downloads  
Updated November 24, 2015 | Dataset date: Nov 11, 2014  
This dataset updates: Every year

Number of people killed in natural disasters disaggregated by country and year

**Disaster Loss Data for Togo**

United Nations Office for Disaster Risk Reduction (UNISDR)  
300+ Downloads  
Updated January 4, 2016 | Dataset date: Dec 31, 2013  
This dataset updates: Never

Number of Deaths, Injured, Missing, Houses Destroyed, Houses Damaged, Victims Affected, Relocated, Evacuated, Losses and Damages in crops by climate change event

**Disaster Loss Data for Mali**

United Nations Office for Disaster Risk Reduction (UNISDR)  
600+ Downloads  
Updated January 4, 2016 | Dataset date: Dec 31, 2013  
This dataset updates: Never

Number of Deaths, Injured, Missing, Houses Destroyed, Houses Damaged, Victims Affected, Relocated, Evacuated, Losses and Damages in crops by climate change event

**Disaster Loss Data for Niger**

United Nations Office for Disaster Risk Reduction (UNISDR)  
400+ Downloads  
Updated January 4, 2016 | Dataset date: Dec 31, 2013  
This dataset updates: Never

Number of Deaths, Injured, Missing, Houses Destroyed, Houses Damaged, Victims Affected, Relocated, Evacuated, Losses and Damages in crops by climate change event

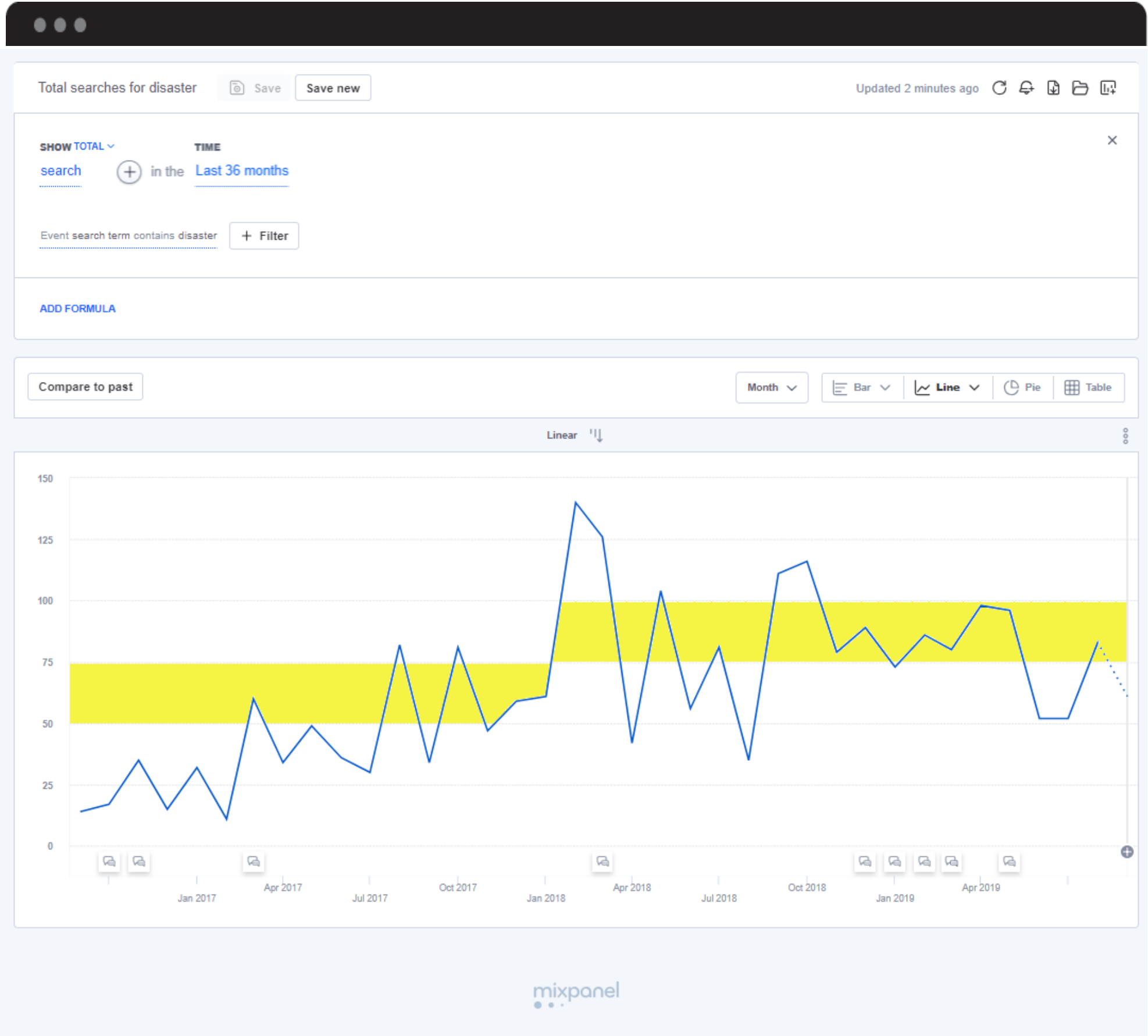
**Disaster Loss Data for Senegal**

United Nations Office for Disaster Risk Reduction (UNISDR)  
200+ Downloads  
Updated January 4, 2016 | Dataset date: Dec 31, 2013  
This dataset updates: Never

Number of Deaths, Injured, Missing, Houses Destroyed, Houses Damaged, Victims Affected, Relocated, Evacuated, Losses and Damages in crops by climate change event

Searches of #Disaster data on HDX before July 2018: 75

Searches of #Disaster data on HDX after July 2018: 125





“HDX has become the **go-to location** for humanitarian data. We are able to get much more **visibility** of the OSM data because it gets published on HDX every 24 hours for many countries.

It has helped us to **elevate the profile** of what we’re doing.”

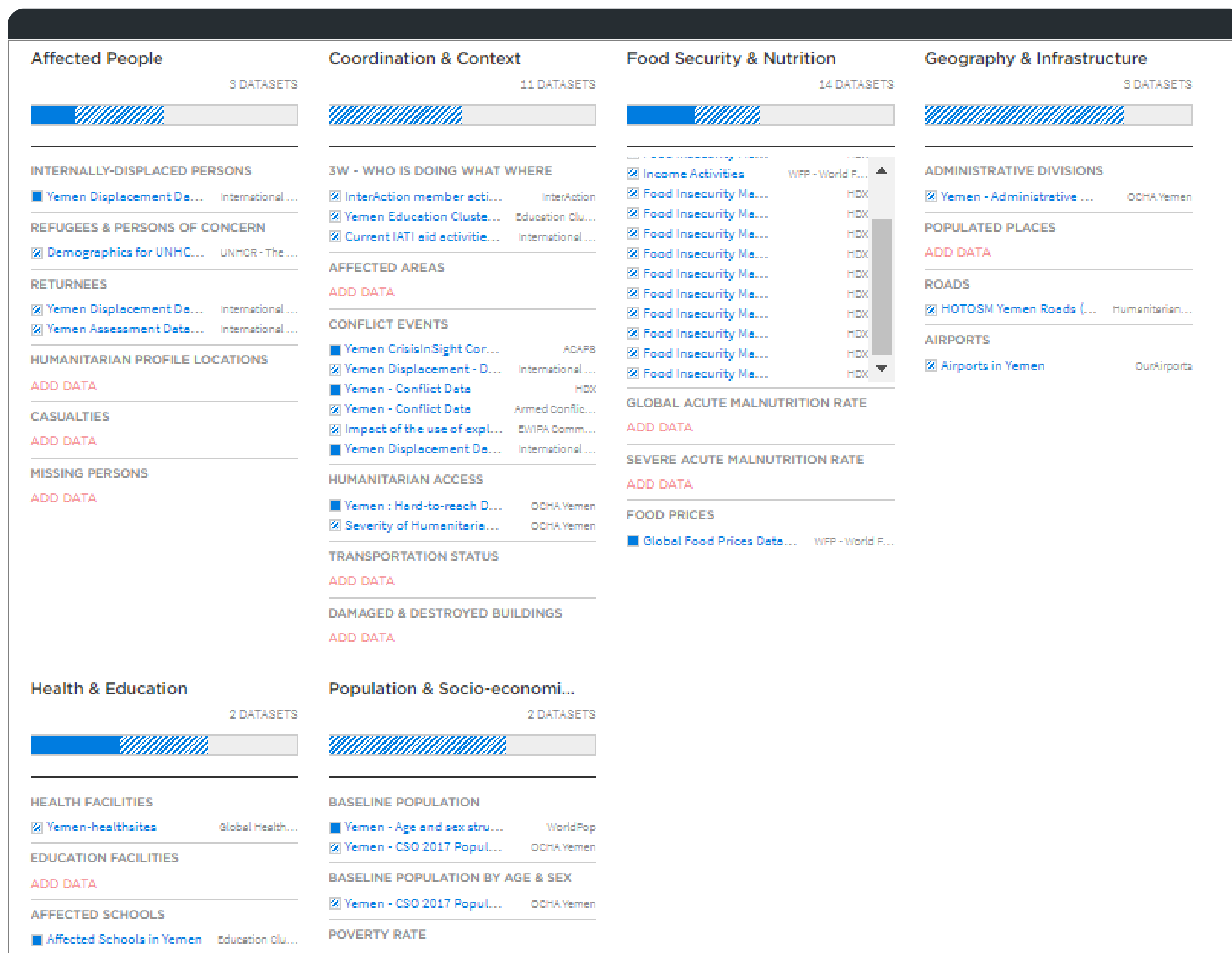
- Tyler Radford, Executive Director, Humanitarian OpenStreetMap Team

# Data **Grid**

# Data Grid

Showing what critical data is available and missing so that all of us can be more focused with data sharing and outreach.

<http://bit.ly/2X9iZig>





The Data Completeness Grid defines **26 core datasets** and indicates if they are complete, incomplete or absent.

## Coordination & Context

5 DATASETS



### 3W - WHO IS DOING WHAT WHERE

■ Afghanistan : Operation... OCHA Afghani...

### AFFECTED AREAS

▨ Whole of Afghanistan As... REACH Initiative

### CONFLICT EVENTS

▨ Afghanistan - Conflict Data Armed Conflic...

▨ Afghanistan - Conflict Data HDX

### HUMANITARIAN ACCESS

ADD DATA

### TRANSPORTATION STATUS

ADD DATA

### DAMAGED & DESTROYED BUILDINGS

■ Afghanistan - Natural Dis... OCHA Afghani...

As of October 16th:

**14 Countries** with Data Grids

**25%** of categories complete

**34%** of categories incomplete

**48%** missing

## Coordination & Context

5 DATASETS



### 3W - WHO IS DOING WHAT WHERE

■ Afghanistan : Operation... OCHA Afghani...

### AFFECTED AREAS

▨ Whole of Afghanistan As... REACH Initiative

### CONFLICT EVENTS

▨ Afghanistan - Conflict Data Armed Conflic...

▨ Afghanistan - Conflict Data HDX

### HUMANITARIAN ACCESS

ADD DATA

### TRANSPORTATION STATUS

ADD DATA

### DAMAGED & DESTROYED BUILDINGS

■ Afghanistan - Natural Dis... OCHA Afghani...

# Help us fill the **data gaps**!

There are currently **14 Data Grids** available on **HDX Location Pages**:  
Afghanistan, Bangladesh, Central African Republic, Chad, Colombia,  
Democratic Republic of the Congo, Indonesia, Mozambique, Myanmar,  
Philippines, Somalia, Sudan, Venezuela and Yemen.

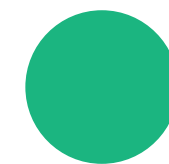
We are looking to **fill the gaps for the following categories** of data:



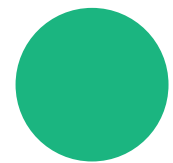
Damaged and destroyed  
buildings



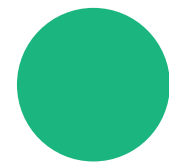
Humanitarian access



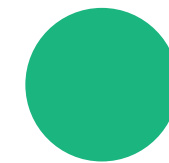
Transportation status



Affected schools



Affected areas



Malnutrition rates

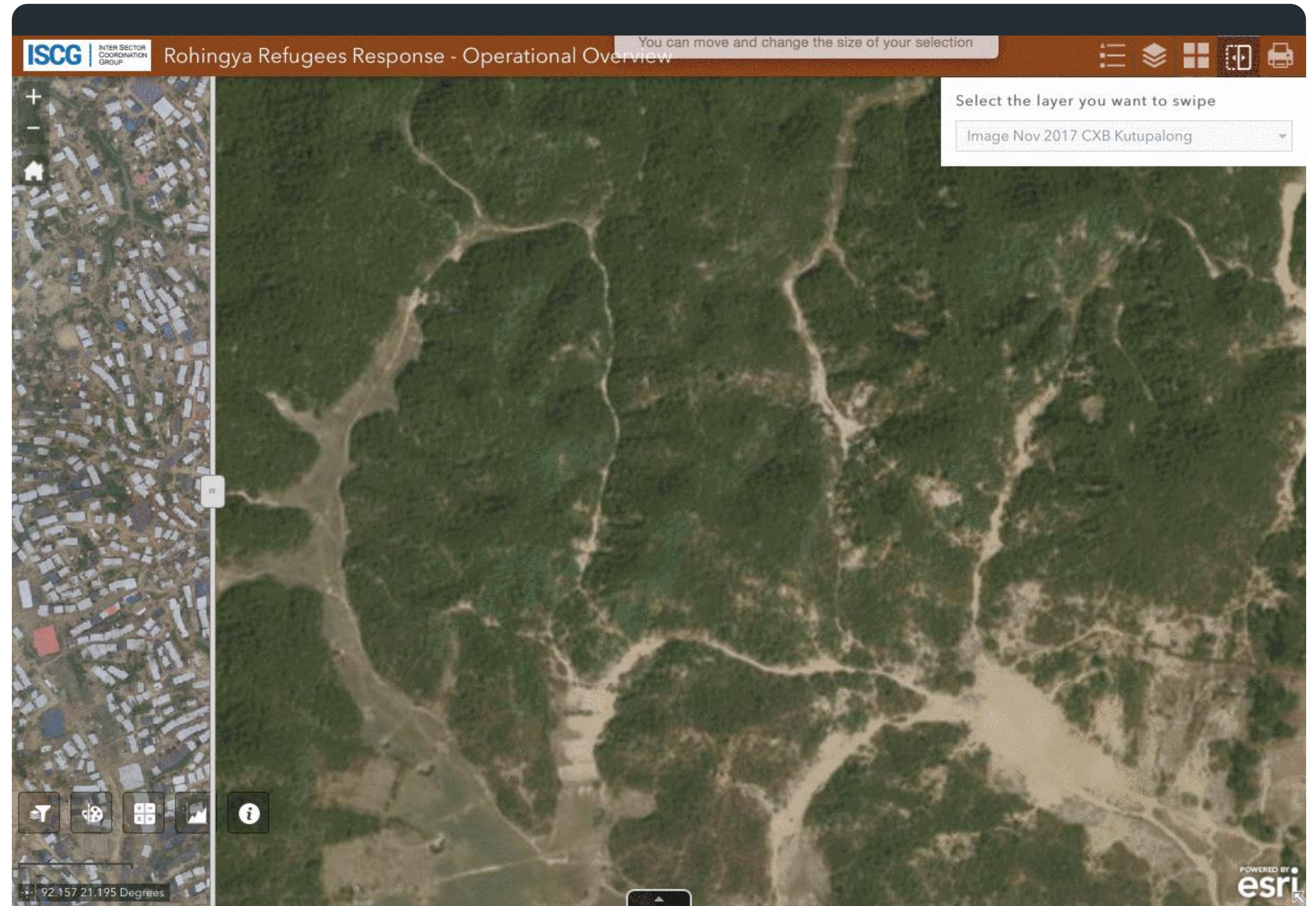


## DATAVIZ

# Rohingya Refugees Response

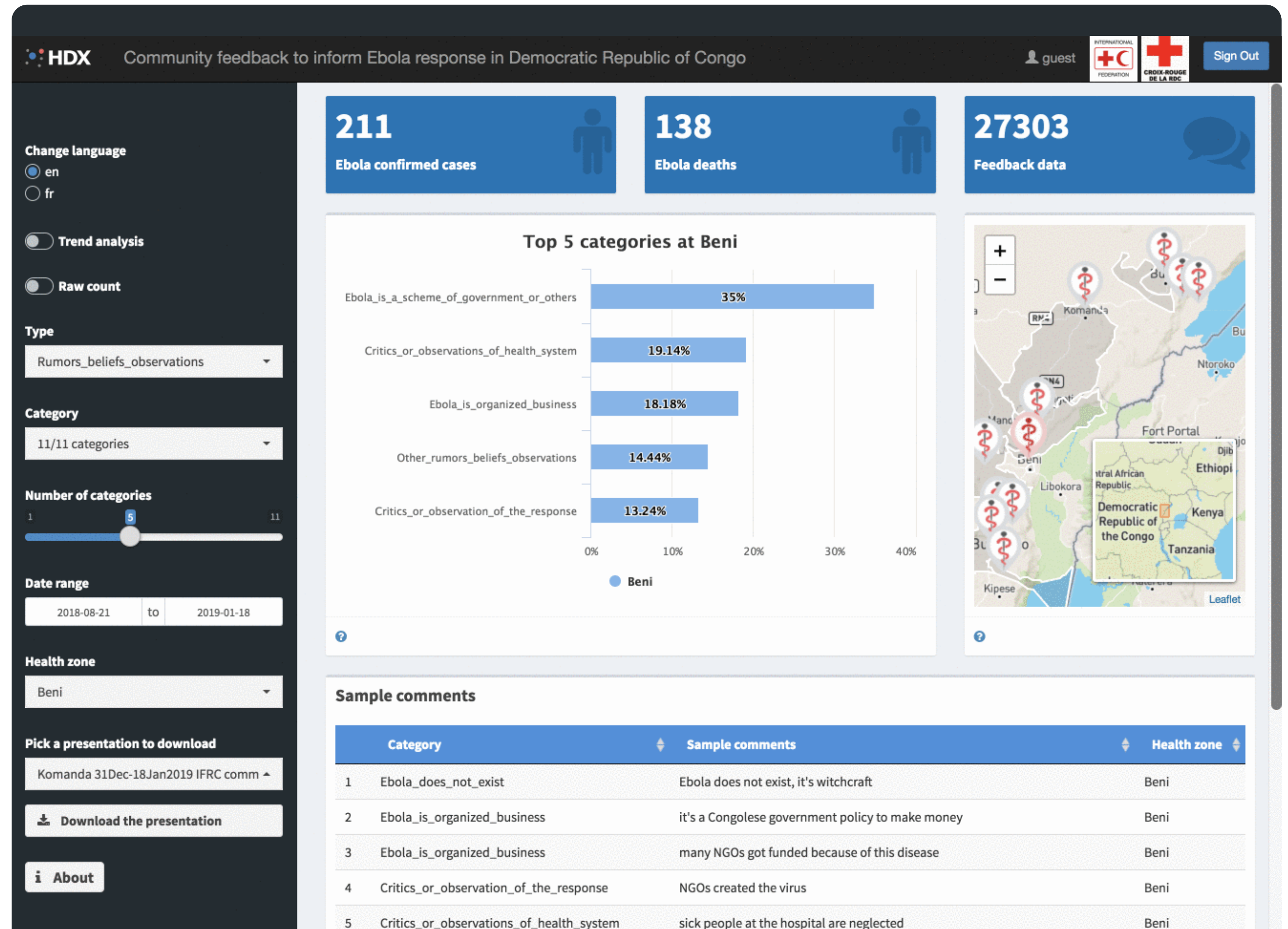
The Centre partnered with ISCG to use the Displacement Tracking Matrix (DTM) for this interactive dashboard.

<https://goo.gl/qS59GN>





Login details to be provided  
<https://ebola-feedback.ml/>



The **OCHA Data Responsibility Guidelines** offer principles, practices, processes, and tools for the **safe and ethical management of data** in humanitarian response.









# KEY ACTIONS & OUTPUTS FOR DATA RESPONSIBILITY IN THE DATA MANAGEMENT PROCESS

## Fundamentals

### FUNDAMENTALS TO GET INTO PLACE:

-  Data ecosystem map
-  Information Sharing Protocol
-  Tools for data management
-  Required resources, skills and training



## STEPS IN THE DATA MANAGEMENT PROCESS



# Thank you

[centre.humdata.org](https://centre.humdata.org)

 [humdata](#) | [centrehumdata@un.org](mailto:centrehumdata@un.org)

